

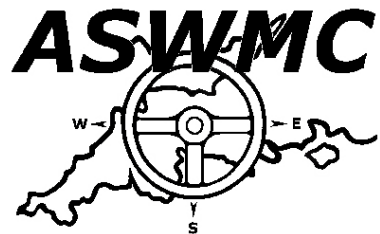


Exmouth Motor Club



**Historic Motorsport South West
Exmouth Memorial Rally**

Final Instructions



motorsport uk

**Saturday 30th November –
Sunday 1st December 2024**

Exmouth Memorial Rally 2024

HISTORIC MOTORSPORT (SW) LIMITED



At Historic Motorsport (South West) Ltd we specialise in building and maintaining rally cars for professionals and enthusiast alike.

We have expert knowledge and experience of working with Mk 1 and Mk 2 Escorts.

- Rally car preparation.
- Bodyshell fabrication.
- Classic car restoration.
- Bespoke wiring looms & dashes.
- Competition parts.
- New and used parts for sale.
- Supplier of Cobra seats, Revolution Wheels & Magnum panels.



www.historicmotorsport.net

info@historicmotorsport.net

01395 233338 07968 990150

Visit our online shop

Thank you for your entry into the 2024 Historic Motorsport South West Exmouth Memorial Rally!
We would like to thank you all for entering, we hope that the event will deliver what you hope, and we can deliver an enjoyable and successful nights rallying.

Initial Plotting

You will receive a pack after you have been through scrutineering and noise test at the signing on desk inside Greendale Farm Shop. This will include various items such as your rally plates and timecards as well as some plotting information for the event including things such as quiet zones, cautions and blackspots. We want you to have as much time as possible to get these on the map as they are important! This year due to the roads we are using and length of the route, there is a lot of plotting, so we would advise you to arrive as early as possible to get this onto the map in plenty of time!

Signing On

This will be done digitally this year and as per regulations, it is already open and will close at 23:59 on the 29th of November. Please make sure that BOTH crew members are signed on, copies/photographs of licences are uploaded and ALL information on the entry form is complete. This signing on process is finished manual by us, so if it doesn't say you are signed on straight away then bear with us, will be do it as soon as possible. Please make sure this is all done before you arrive as this will reduce any delays for your signing on pack and start time. We will not be chasing competitors like previous this year, so it's down to you. If you are not fully signed on, then you will need to bring all relevant documentation to the start.

Trailer Park

This is located at the start venue, Greendale Farm Shop, Sidmouth Road, Farringdon, Exeter, EX5 2JU (Map 192 / 012.75 903), Please see below map and overview and please park as neatly as possible to allow other trailers to be parked. This is also the overflow car park and staff car park for the farm shop, so please be VERY SLOW and careful when you are here as members of the public will be visiting the shop as normal. The landowners and event organisers except no responsibility for vehicles or trailers left here.

Noise Test

Is located at Greendale Farm Shop, please see below overview and queue quietly. Please leave any access to gateways or entrances clear. Please visit here after unloading from the trailer, here you will pick up your scrutineering card.

Scrutineering

Will be located at Greendale Farm Shop as well. Please see map and overview below and follow the indicated route only.

Once you have finished the above checks, please fill up your fuel tanks (if required) and then park in the allocated parking space. Please can car 1 park as shown in the below map and then proceeding numbers following around the edge of the car park clockwise. As mentioned above the shop will still be open to members of the public so some public cars may be parked in spaces as they may not know about the event. Once you have parked, please hand in your scrutineering card to Signing

On/Documentation where they will check we have all your correct information and then hand you your initial pack of information.

Please remember this is a working farm shop and members of the public will be shopping during opening hours, please take extreme care and driver very slowly in the car park if you are early!

Rally Plates

You will receive two rally plates, please affix these to the near side rear window and the near side of the rear window.

Drivers Briefing

Will be held at Greendale Farm Shop at 20:30, please attend as some important information may be spoken about.

If you require the applied for **REIS Insurance** blanket cover then please make sure this is paid before you arrive at the start and if you do not meet the eligibility criteria that your insurance premium is agreed and paid as we do not have any facilities to take this payment at the start.

Driving Standards Observers (DSOs)

Will be on route and special attention will be given to driving standards. We ask for your cooperation of all instructions to safeguard the future use of these areas. This year has been harder than ever to run this event, and we have lost several brilliant roads due to various reason, please do not add your name to these reasons! There are PR sensitive areas that the route will pass through; these will be marked as Quiet Zones. There will be no acceptance of any competitor not adhering to the rules in these locations.

Competitors are reminded of Section 170 of the Road Traffic Act 1988 and Rule 286 of the Highway Code. Any injury and/or incidents must be reported to the Police authority.

Greendale Farm Shop Café and Fish & Chip Shop

Will be open until just after 22:00, please use these facilities as much as possible as they have been fantastic to work with and we hope to use them as a venue in the future.

MTCO

You will be able to collect your plotting information at MTCO, times of which will be displayed on the notice board at the start. Plotting information will be handed out in seeded order. The MTCO time for car 0 will be 21:00 and then car 1 will collect their pack at 21:01. There will be strictly NO PLOTTING INSIDE the farm shop. Please return to your vehicles and plot there.

Fuel

Will be available at approximately 40 miles from the start. You will visit a card collection on the way into the fuel who will collect your timecards. Please fill up with fuel and pay as quickly and as quietly as possible, these is a hotel on site no running engines!

During the event

If you retire, or for some reason have to head back to trailer park, the front gates to the farm shop will be closed and locked. Please use the rear entrance which is accessible via Greendale Business Park. If you are using this then please make sure you are SLOW and QUIET as the business park is operational 24/7.

Finish

The finish will be back at Greendale Farm shop where you will hand in your damage declaration in exchange for two breakfast tickets.

Results

Provisional results will be displayed at the finish venue as soon as possible. Any queries should be submitted straight away as results will be going final at the finish venue and awards will be handed out.

Please find below changes to the Supplementary Regulations (SRs), map for the start and the provisional timetable.

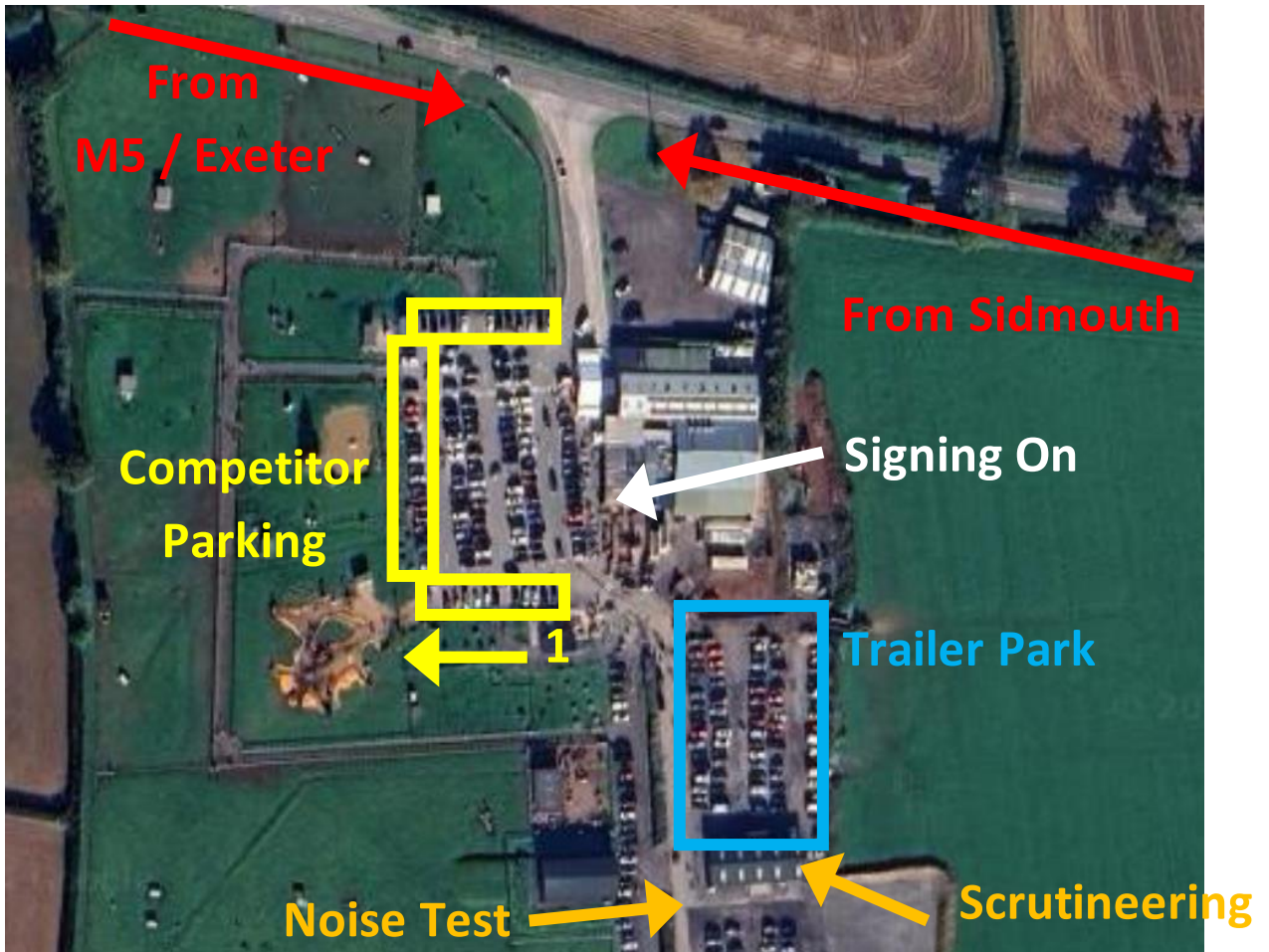
See you all on Saturday!
Daniel and the Organising Team

Provisional Timetable

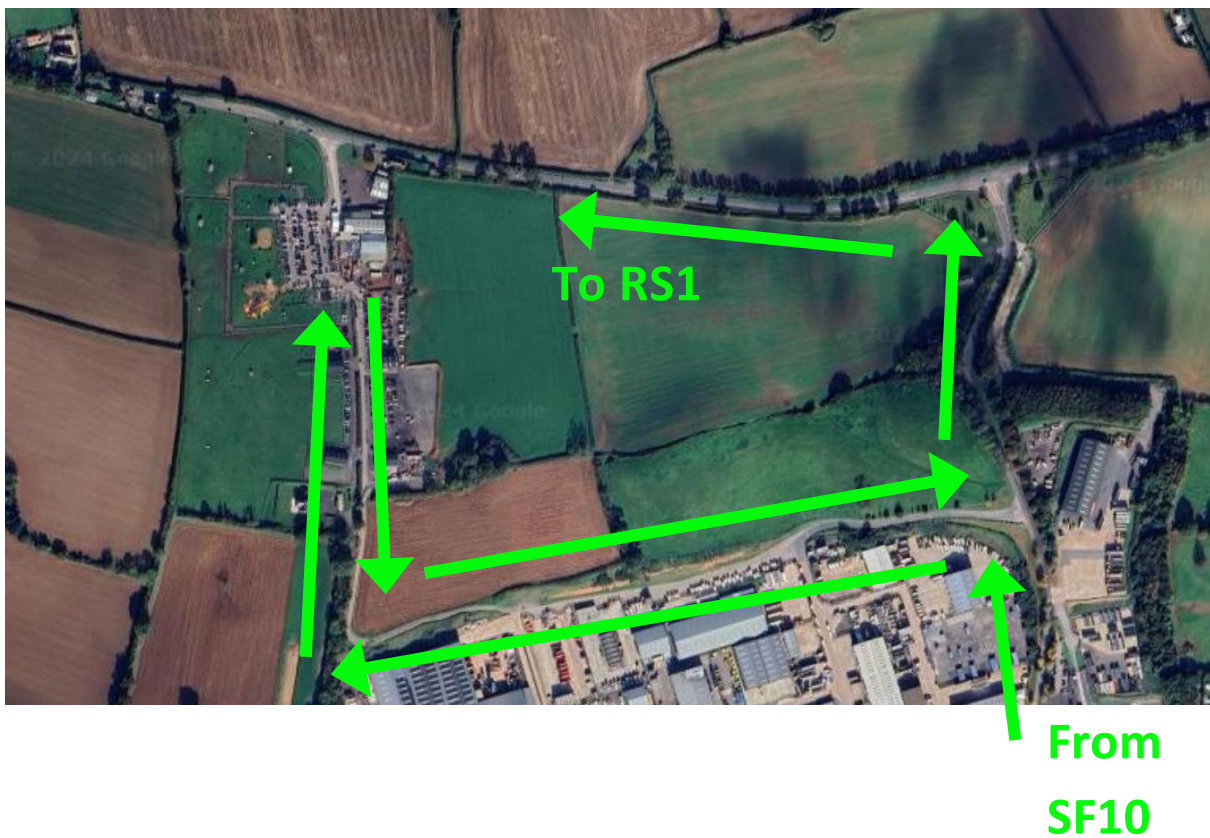
Noise Test	19:00 to 20:30
Scrutineering	19:00 to 20:30
Competitors Signing On	19:00 to 20:30
Marshals Signing On	19:00 to 21:00
Drivers Briefing	20:30
Marshals Briefing	~21:00
MTC0	21:00
MTC1	23:00
MTC2 – Fuel 1 Out	01:05
MTC3 – Fuel 2 Out	04:05
MTC3 – Finish	06:00

Please note MTC times are for 'Car 0'

Start/Finish Venue Overview



Route in and out of Start/Finish Venue



Amendments to SR's

14 – Penalties

Penalties are based on R12 (time), with the following modifications	
All Sections	
(a) Not reporting at or reporting OTL at a MTC	Retired
(b) Not reporting at or reporting OTL at any other time control	1800 seconds
(c) Not complying with the route card including: visiting a time control more than once (unless instructed to do so) or wrong approach or wrong depart.	900 seconds
(d) Not reporting to a PC, not providing proof of visiting or failing to have information recorded correctly at an RC and not getting and RC countersigned at the next manned control.	300 seconds
(e) Arrival before scheduled/due time at the end of a standard section	180 seconds per early minute
(f) Arrival after due time at the end of a standard section	60 1 seconds per minute second
(g) Arrival before due time at the end of a neutral section Second offence	1800 seconds Exclusion
(h) (i) Arrival before or after due time at an intermediate control or finish control of a Regularity Section timed to the second (ii) Arrival before or after due time at an intermediate control or finish control of a Regularity Section timed to the minute	2 1 seconds per second early or late 120 60 seconds per minute early or late
(i) Failure to stop at a Control Board marking the area of a manned control Second offence	Warning 60 seconds per offence
(j) Breach of any statutory requirement concerning the use of a motor vehicle	Exclusion
(k) Excessive speed, sound or driving in a manner likely to bring Motorsport into disrepute	Exclusion
(l) Receiving assistance contrary to R7.2.4.	Exclusion
(m) Breach of R7.2.3, R9.1.3, R9.1.4, R9.1.5, R9.1.6, R11.6, R11.6.1, R15.1.2, R15.1.4 & “2018 18.6.4. For all road events, the use of global positioning systems or any other type of position determining device is prohibited”.	Exclusion
(n) Not complying with a reasonable instruction issued by an official, providing a warning that a penalty will be applied is given	Exclusion
(o) Unauthorised alternation of a timecard	Exclusion
(p) Not complying with Covid-19 protocol.	1 st time – Warning 2 nd time - Exclusion
(q) Opening ‘Plot and Bash’ envelope before instructed time and/or location.	1800 seconds

15 – Controls

There may be the following types of controls and check, penalties as per SR14

Neutral TC (NTC)	As per R10.3.
Regularity Start (RS)	As per R10.4.
Section Start (SS)	As per R10.2.
Regularity Finish (RF)	As per R10.4.
Section Finish (SF)	As per R10.2.
Intermediate TC (ITC)	As per R10.4.1.
Transport Time Control (TTC)	As per R10.5.
Route Check (RC)	As per R11.3.

Passage Control (PC)	As per R11.4.
Time Control (TC)	As per R11.5.
Main Time Control (MTC)	As per R11.6.

All manned controls where competitors are required to stop will have a Control board on the correct direction of approach, this marks the beginning of the control area. They must be visited in the order shown on the route card – failure to do so will be penalised as per SR14(c). For marshal safety, all competitors are required to come to a complete **STOP** at the board, before proceeding to the control. Timing will be as competitors **PASS** the board. Penalty as SR14(j).

Some controls may be “not as map” junctions, such controls will have a control area of 3 metres. They will be identified on the route card and may be preceded by a control board on the correct direction of approach. The organisers may provide diagrams of such controls.

Any control that is unmanned will be replaced by a code board and may be preceded by a control board and its status will be demoted to a route check. These must be recorded in **INK** and countersigned or confirmed by the marshal at the **NEXT** manned time or passage control (not DSO).

It is not the duty of the marshal to interpret regulations or any other written instructions to a competitor, or to explain the meaning and/or written instructions.

A competitor who causes any kind of harassment to a marshal or any other official, or who remains in a control area after an instruction to depart has been given, will be penalised as per SR14(n) and reported to the stewards of the meeting.

An altered or amended timecard will be accepted if it is countersigned or confirmed by the marshal at the time of alteration. It is the competitor’s responsibility to ensure that his/her timecard is correctly marked. Any unauthorised alteration of a competitor’s timecard will be penalised as per SR14(o).

Controls will be open ~~15~~ 30 minutes before the due time of the first car, and close at the scheduled time of the last car plus the maximum permitted lateness allowed for the control.

Controls before MTC2 will have an OTL time of 15 minutes and 59 seconds. All other control will have an OTL of 30 minutes and 59 seconds.



Greendale FARM SHOP



FARM SHOP | CAFÉ & RESTAURANT | FISH & CHIPS | FARM TRAIL



www.greendale.com | Sidmouth Rd, Farringdon, Exeter EX5 2JU